

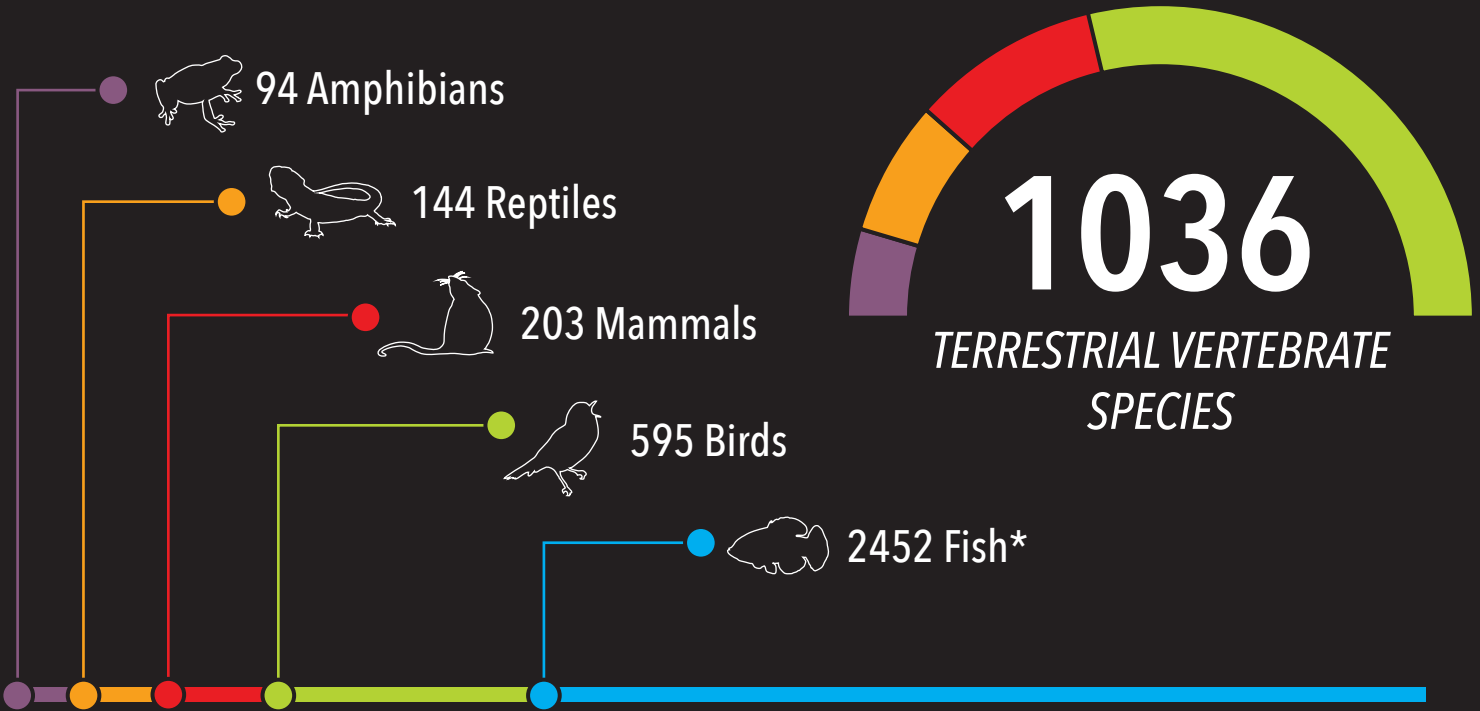
Camino del Jaguar

Esmeraldas, Ecuador • 213,000 hectares / 526,000 acres



BIODIVERSITY SNAPSHOT

BIODIVERSITY OVERVIEW



*A minimum estimate - the species data available for this taxon in this area is incomplete.

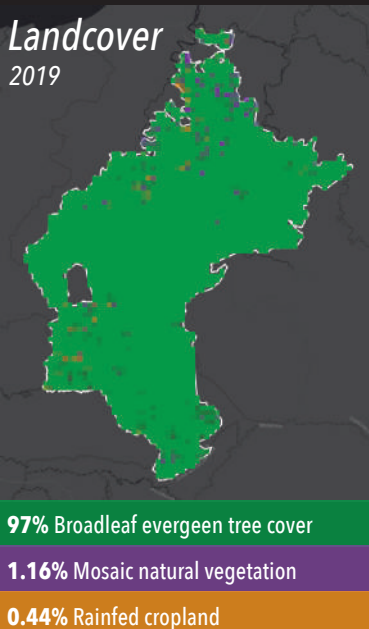
HALF-EARTH GOAL



This area is one of the top 10% most important regions in Ecuador for biodiversity conservation. It is recognized as a region of **global conservation priority** by Places for a Half-Earth Future.

ENVIRONMENTAL ATTRIBUTES

Landcover 2019



Tree Cover Change from 2000 to 2020

↓ **6.60 kha**
or 3.1% lost since 2000

↑ **1.50 kha**
or 0.7% gained since 2000



Climate

3,521
mm rainfall annually

24.2 °C
average annual temperature

6.7 °C
average annual temperature range



Elevation Range

20 – 1,632
meters above sea level

Aboveground Carbon

4,935,915 Mg
total in 2021

Camino del Jaguar

Esmeraldas, Ecuador • 213,000 hectares / 526,000 acres



BIODIVERSITY SNAPSHOT

REDLIST SPECIES

This area is home to **71** RedList terrestrial vertebrate species. These species have an average **Species Protection Score (SPS)** - a metric that assesses how close a species is to reaching its spatial protection target from 0 to 100 - of just **34.2**. Within Ecuador, the average national SPS of these species is only **24**.

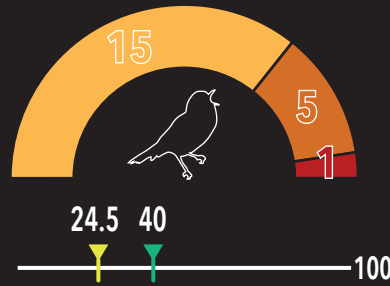
7 CRITICALLY ENDANGERED VERTEBRATES

24 ENDANGERED VERTEBRATES

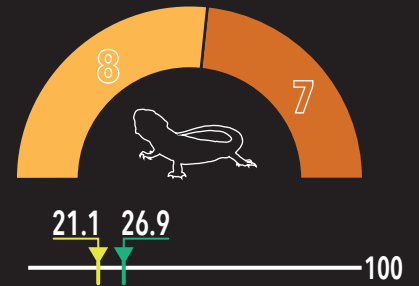
40 VULNERABLE VERTEBRATES



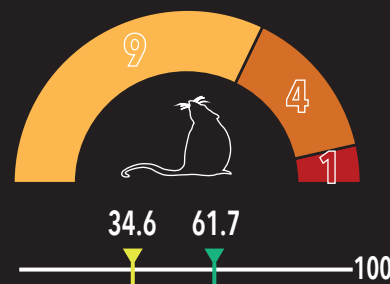
21 BIRDS



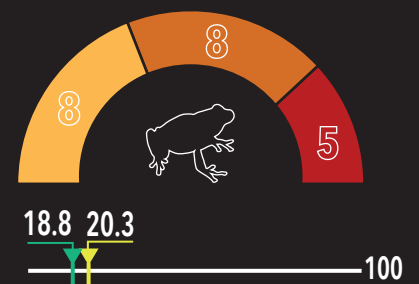
15 REPTILES



14 MAMMALS



21 AMPHIBIANS



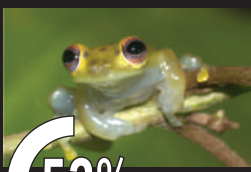
HALF-EARTH GOAL



30 SPECIES would reach their conservation targets if the appropriate habitats within this area were protected, representing 4% of the species found here.

RANGE DEPENDENT SPECIES

This area provides **at least 30%** of the total suitable habitat for **7 terrestrial vertebrate species**, many of which are **endemic** to Ecuador. Six of them are shown below. This area is one of the **only places in the world** that supports the survival of these species.



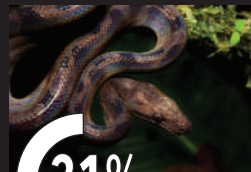
VU Littoral Glass Frog
Cochranella litoralis



VU Scarlet-Breasted Dacnis
Dacnis berlepschi



CR Hotel Zaracay Salamander
Bolitoglossa chica



EN Blomberg's Tree Boa
Corallus blombergi



NT Matapalo Broad-Nosed Bat
Platyrrhinus matapalensis



EN Elegant Stubfoot Toad
Atelopus elegans



CITATIONS

BIODIVERSITY DATA

Map of Life Regions. 2024. Species list for Camino del Jaguar Esmeraldas, based on a large number of biodiversity datasets. Generated on Feb 7 2024 at mol.org/regions.

Jetz W., McPherson J. M., Guralnick R. P., Integrating biodiversity distribution knowledge: Toward a global map of life. *Trends Ecol. Evol.* 27, 151–159 (2012). [10.1016/j.tree.2011.09.007](https://doi.org/10.1016/j.tree.2011.09.007)

The Half-Earth Project Map. 2024. Accessed on Feb 7 2024 at map.half-earthproject.org.

SPECIES PROTECTION INDEX

The Species Protection Index. Map of Life. <https://mol.org/indicators/protection/background>

ENVIRONMENTAL ATTRIBUTES

Aboveground carbon

Noon, M.L., Goldstein, A., Ledezma, J.C. et al. Mapping the irrecoverable carbon in Earth's ecosystems. *Nat Sustain* 5, 37–46 (2022). <https://doi.org/10.1038/s41893-021-00803-6>

Elevation

Noon, M.L., Goldstein, A., Ledezma, J.C. et al. Mapping the irrecoverable carbon in Earth's ecosystems. *Nat Sustain* 5, 37–46 (2022). <https://doi.org/10.1038/s41893-021-00803-6>

Land cover

ESA. Land Cover CCI Product User Guide Version 2. Tech. Rep. (2017). Available at: maps.elie.ucl.ac.be/CCI/viewer/download/ESACCI-LC-Ph2-PUGv2_2.0.pdf

Forest cover change

Accessed through Global Forest Watch on 14/02/2024. www.globalforestwatch.org.

Potapov, P., Hansen, M.C., Pickens, A., Hernandez-Serna, A., Tyukavina, A., Turubanova, S., Zalles, V., Li, X., Khan, A., Stolle, F., Harris, N., Song, X-P., Baggett, A., Kommareddy, I., and Kommareddy, A. 2022. The Global 2000-2020 Land Cover and Land Use Change Dataset Derived From the Landsat Archive: First Results. *Frontiers in Remote Sensing*, 13, April 2022. <https://doi.org/10.3389/frsen.2022.856903>

Climate

Karger, D.N., Conrad, O., Böhrner, J., Kawohl, T., Kreft, H., Soria-Auza, R.W., Zimmermann, N.E., Linder, P., Kessler, M. (2017). Climatologies at high resolution for the Earth land surface areas. *Scientific Data*. 4 170122. <https://doi.org/10.1038/sdata.2017.122>

Karger D.N., Conrad, O., Böhrner, J., Kawohl, T., Kreft, H., Soria-Auza, R.W., Zimmermann, N.E., Linder, H.P., Kessler, M.. Data from: Climatologies at high resolution for the earth's land surface areas. Dryad Digital Repository. <http://dx.doi.org/doi:10.5061/dryad.kd1d4>

SPECIES PHOTOS

Littoral Glass Frog: Justin Touchon-BIOWEB, CC BY-NC-ND 4.0, via bioweb.bio

Hotel Zaracay Salamander: © 2013 Michael W. Itgen, thumbnail via calphotos.berkeley.edu

Matapalo Broad-Nosed Bat: Melissa Pereira, CC BY-NC 4.0, via uk.inaturalist.org

Scarlet-Breasted Dacnis: Nelson Apolo, CC BY-NC 4.0, via inaturalist.org

Blomberg's Tree Boa: CCO

Elegant Stubfoot Toad: Edison Araguillin, CC BY-NC 4.0, via eol.org

SHAPEFILE

Fundación Paisajes Sostenibles - PASOS and the Prefectura of the Esmeraldas Province, Ecuador

This report was finalized on April 18, 2024.